

LEISAR FRONT DOOR (2509)

LEISA REAR DOOR (2510)

CABINET AND COMPONENTS OF COMPLETION (2507)

ASSEMBLY GROUP CAFFE BV 901 230V (2499)

MIXER ASSEMBLY (2505)

BLCK PLS COFFEE GROUP (1422)

GEARMOTOR COFFEE GROUP (483)

NEW VERSION - ESP. + 3 ELV ASSEMBLY + COVER (2525)

ASSEMBLY PISTON (7)

INSTANT PRODUCTS COMPLETION PARTS (2503)

ASSEMBLY GRINDER-DOSER LEI sa (1059)

ASSEMBLY GRINDER LEI sa (1060)

ASSEMBLY DOSER CAFFE (964)

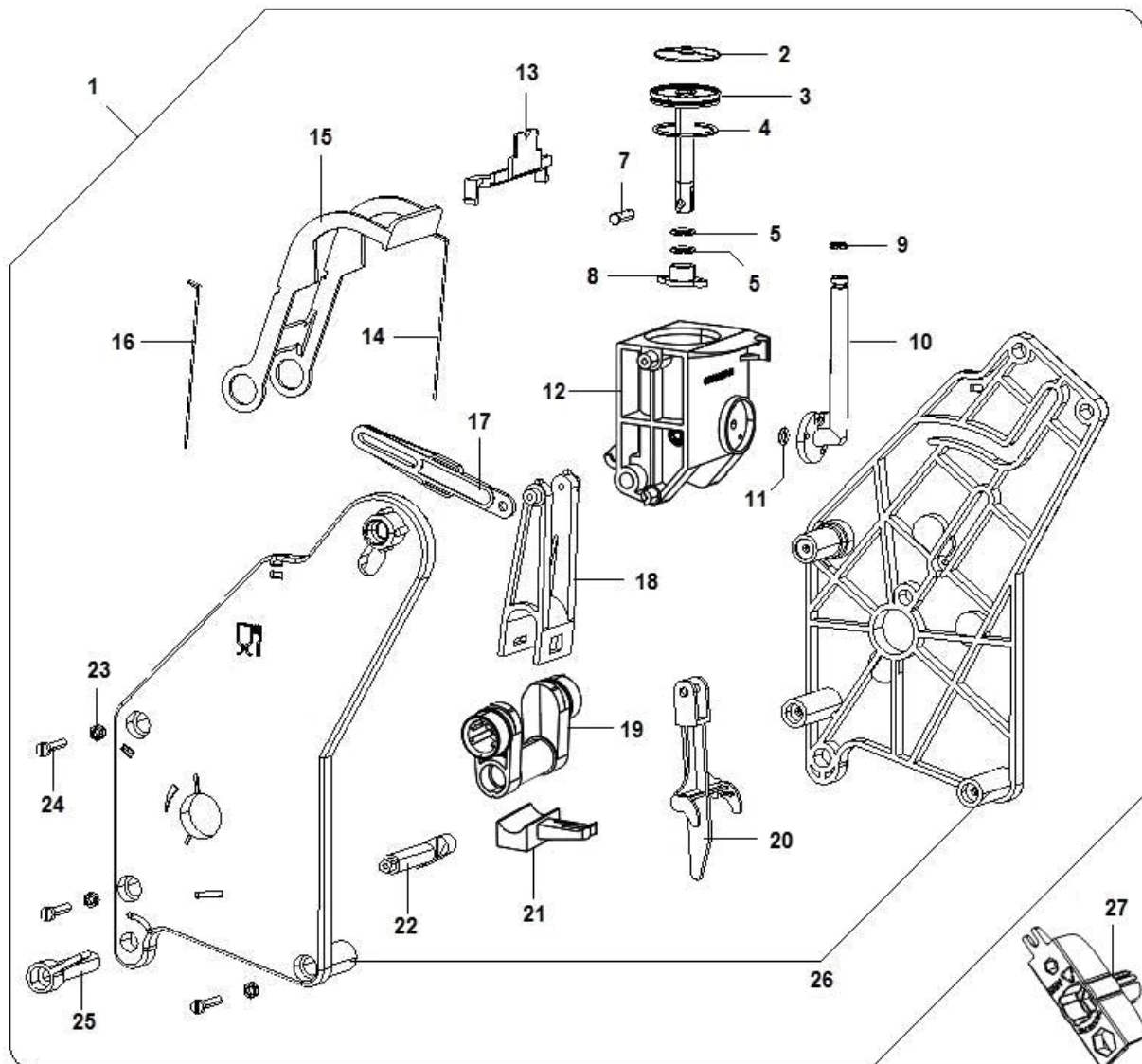
CANISTER DOSER - COFFEE BEAN HOPPER (1505)

HYDRAULIC CONNECTIONS (1271)

WATER BASIN & CONNECTIONS - 2 (2506)

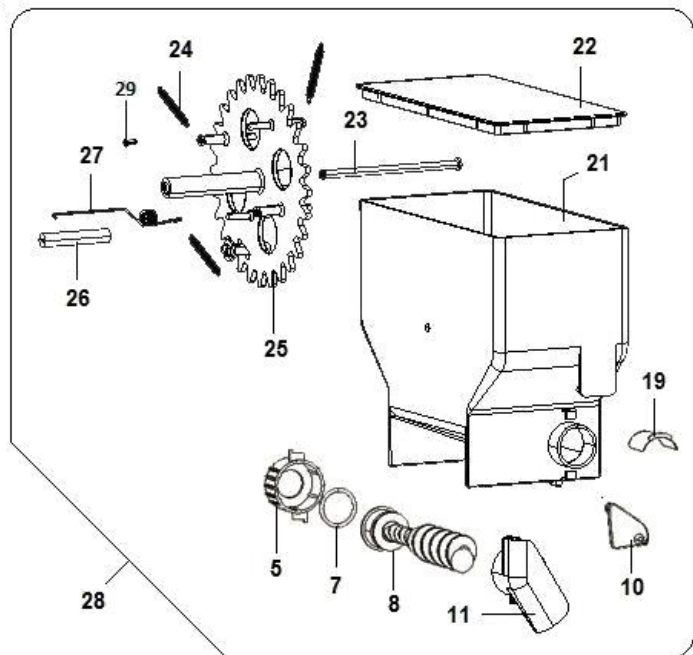
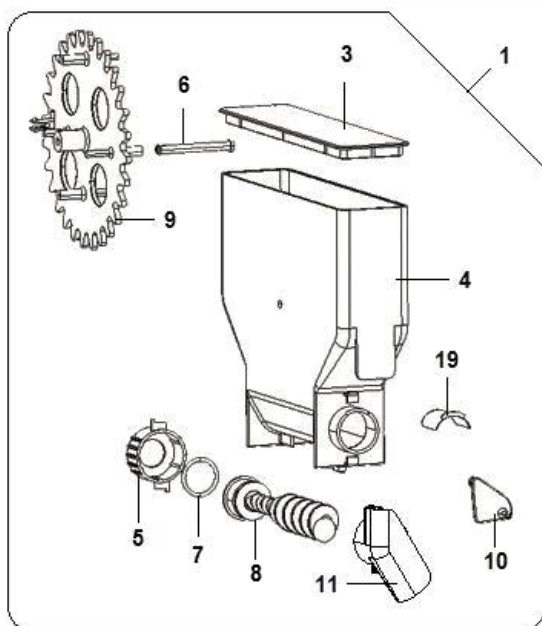
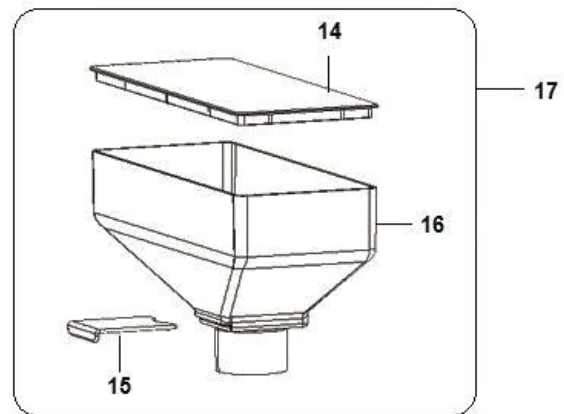
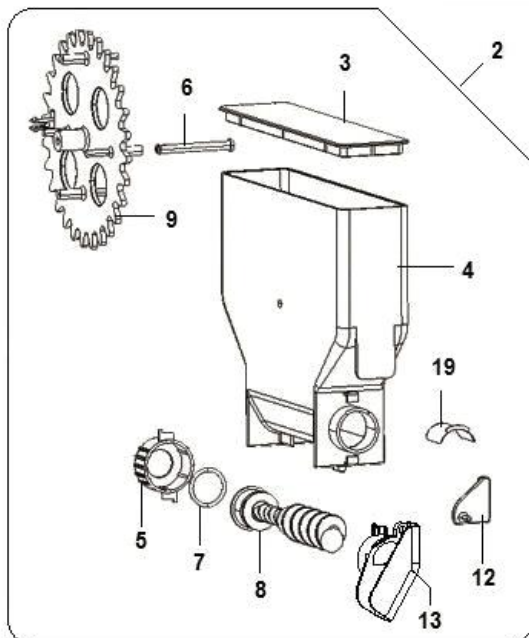
POWER SUPPLY/ASP. LEISA ASSEMBLY (2504)

ASSEMBLY SCHEDE ELETTRONICHE (1049)

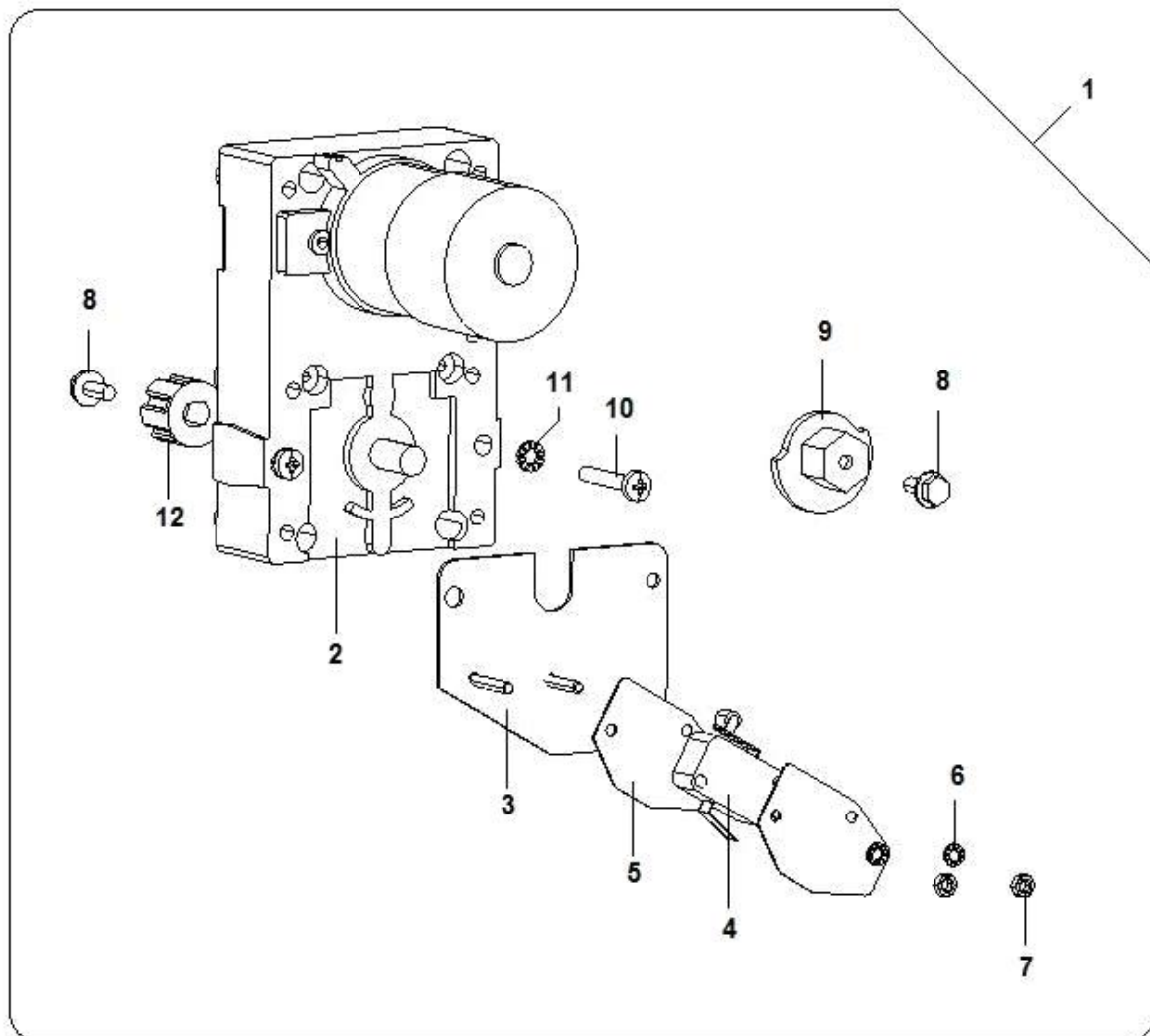


Pos.	Code	Description
0001	95028410-02M09	Black plastic anti-limescale coffee grou
0002	16012021	coffee group filter
0003	05161225-01M06	Grounds expulsion mast
0004	36363116-01	Joint 2118 SH70 VITON
0005	36211916-01	OR 9,25X1,78 FKM 75 SH NERO
0007	05107525M09	Black DS coffee group rivet
0008	05106725M09	Black DS coffee-group cup bush
0009	36351316	o-ring for cooffe group pipe
0010	05106825M09	Black DS Coffee-group cup tube
0011	36210916	OR 5,28X1,78 FKM 75SH NERO
0012	05106625-01M09	BICCHIERINO GR-CAFFE DB NERO
0013	05133525M09	SPACER FOR BLACK DS COFFEE GROUP SIDES
0014	07017921	left spatula spring
0015	05107025M09	Black DS Coffee group spatula
0016	07017911	right spatula spring
0017	05107425M09	Black DS Coffe group drive rod
0018	05107135M09	Coffee group connecting rod
0019	05107635M09	MANOVELLA GR-CAFFE CON CAMMA
0020	05148325M09	Black coffee group rod lifter
0021	05107235M09	STAFFA GRUPPO CAFFE
0022	05107925M09	Black DS Coffe group locking rod
0023	34102836	4MA nut hexagonal
0024	32060936	VITE TCC PG DIN 7985 INOX A2 M 4 X 20
0025	05107825M09	Black DS coffee group locking lever
0026	43123920	front/rear shoulder assembly w/knob
0027	05358715M09	CHIAVE ROTAZIONE GRUPPO CAFFE'

# CANISTER DOSER - COFFEE BEAN HOPPER (1505)

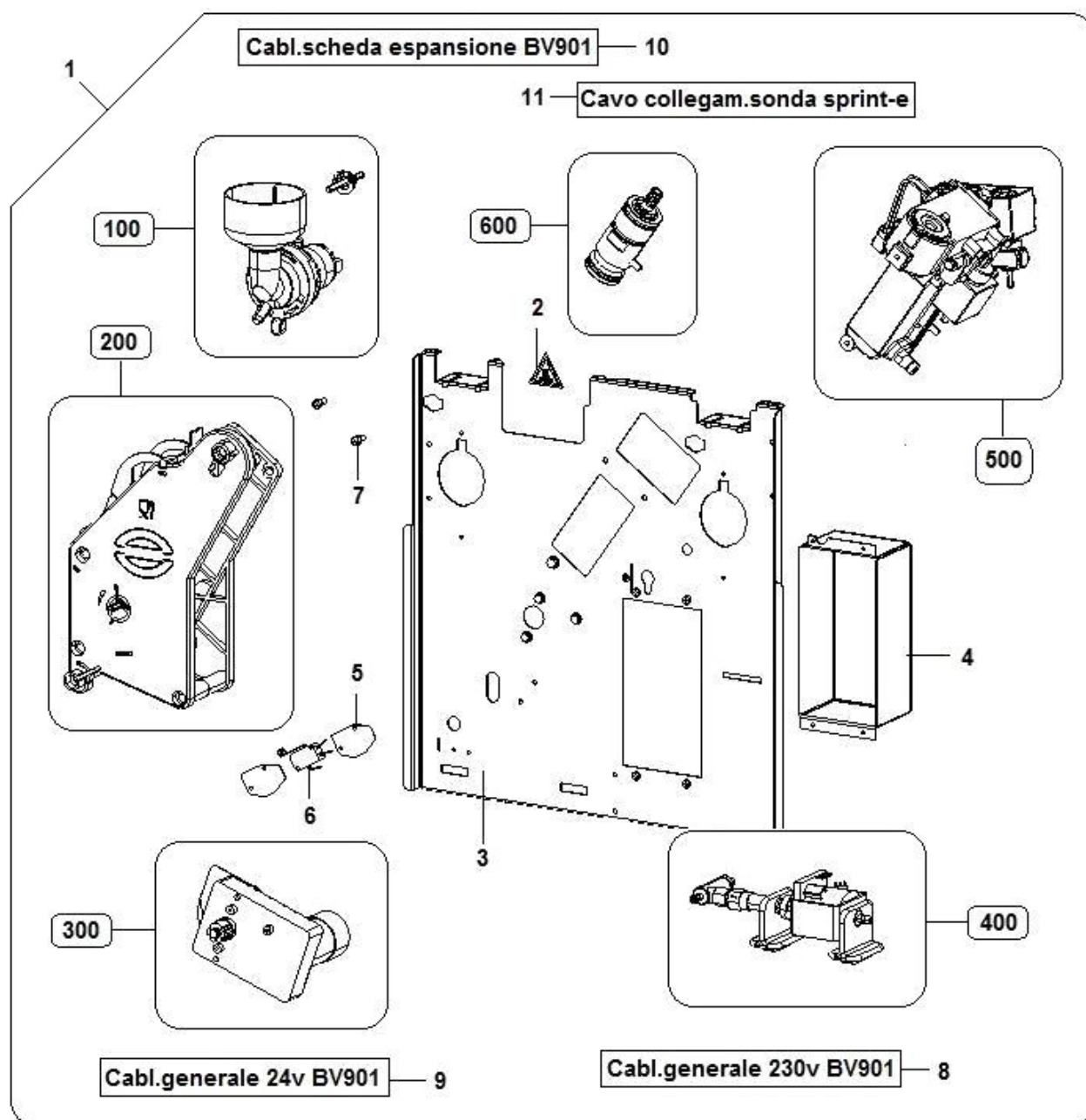


Pos.	Code	Description
0001	96049210-02	Sprint RT single canister w/wheel assy
0002	96049310-02	Sprint LT single canister w/wheel assy
0003	05142515	Left canister cover sprint
0004	05142315-01	Sprint left canister
0005	05142815	lock for disp.canist.auger sprint
0006	05143715	pin for product canister Sprint
0007	36212616-01	OR 23,47X2,62 NBR 70SH ACS
0008	05143415	extracting auger for canister
0009	05142715-02	RUOTA DENT.SC-DOS-S SPRINT
0010	05143015	right slide cap
0011	05142915-01	right slide
0012	05143025	left slide cap
0013	05142925-01	left slide
0014	05147815	cover for beans canis Sprint
0015	05147925M00	SPORTELO CHIUSURA TRAMOGGIA NSF
0016	05146815	sprint beans container
0017	05147710-01	ASS.TRAMOGGIA SPRINT \$y
0018	20020316	24V DC motor quick connect.
0019	05301515M00	Powders exit protection
0020	30088411	iris product canister stickers
0021	05142415-01	Sprint right canister
0022	05142615	right double canister cover sprint
0023	05143725	pin for double prod.canister Sprint
0024	07020241	Canister L.52 w/2 holes agitator spring
0025	05142725-01	Cog-wheel for double dispenser
0026	05147415	Double canister spacer
0027	07021411	canister(double wheel) agitator spring
0028	96049010-05	C/O SC-DOS-D DX SPRINT
0029	32222846	VITE AFIL.TCC DIN 7981 INOX A2 3,5 X 9,5



**GEARMOTOR COFFEE GROUP (483)**

Pos.	Code	Description
0001	20016810-04	Motor assy w-out/24V cable coffee group
0002	20014946-02	24VDC12rpm cof.group gearmotor
0003	01484212	bracket for micro
0004	26005126	microswitch with wheel
0005	08004111M09	ISOLANTE PER MICRO
0006	35160216	self-locking diam.3.2
0007	34102716	M3 hexagonal nut
0008	32050516	screw 4 Mx10
0009	05110915-01M09	black rotating group cam
0010	32061016	4M x 25 screw
0011	35160316	d. 4,2 IX self locking washer
0012	41081216	PLASTIC JOINT COFFE GROUP

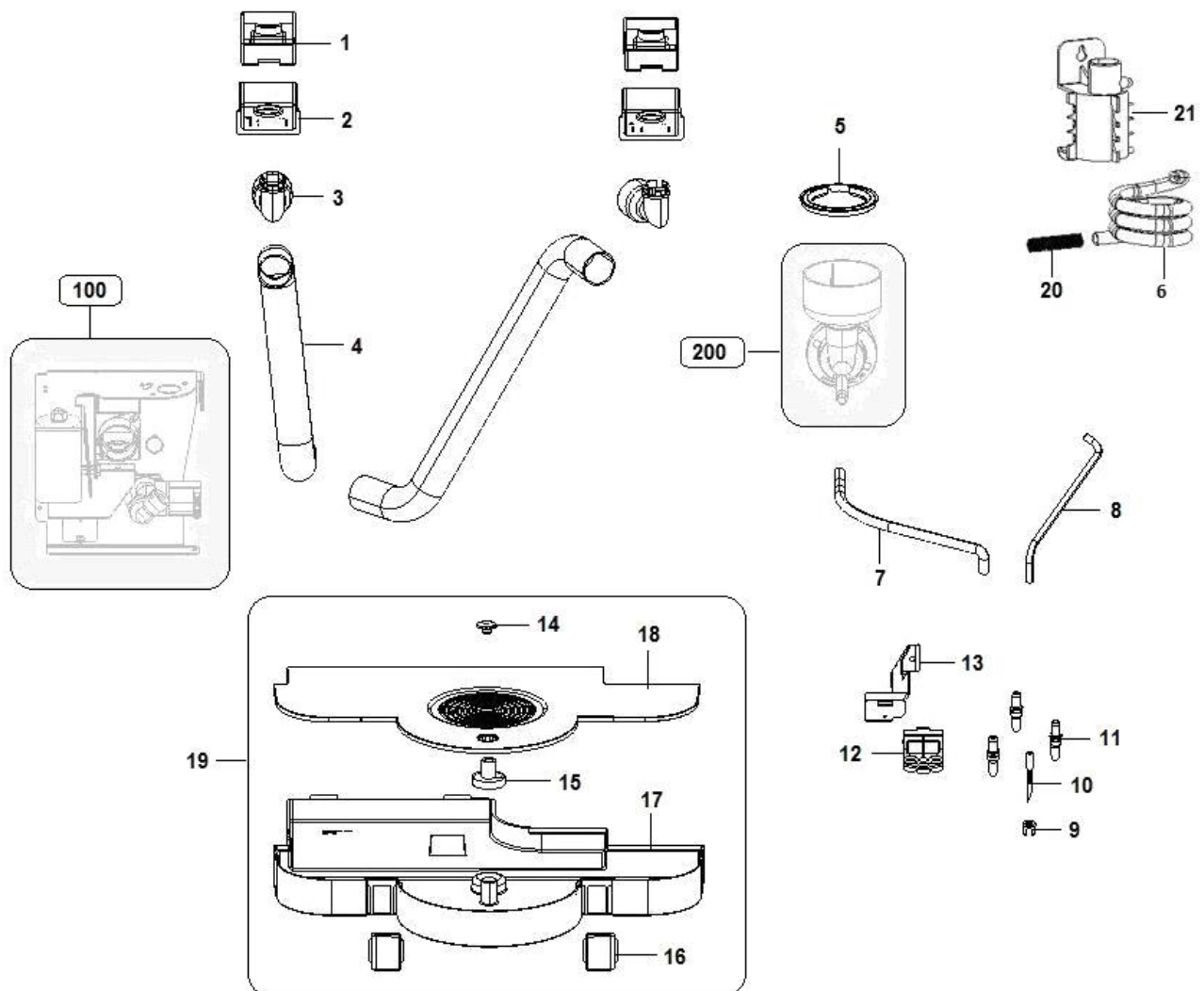






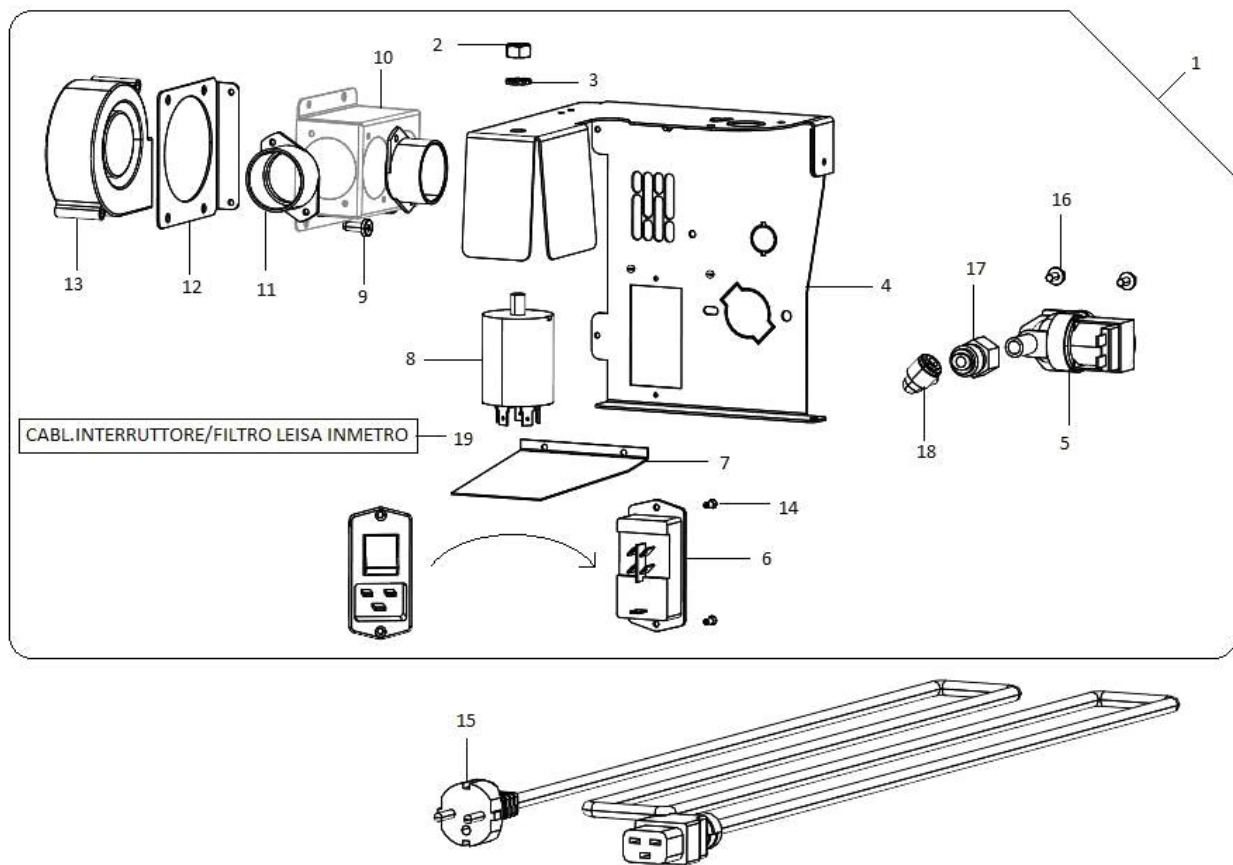
## ASSEMBLY GROUP CAFFE BV 901 230V (2499)

Pos.	Code	Description
0001	95012370CL	C/O GR.CAFFE LEISA RY 230V
0002	30069411-01	temperat.safety sticker
0003	01901512-02L79	Aluminium mixer gr. plate assy
0004	01941511	Pump protection carter
0005	08004111M09	ISOLANTE PER MICRO
0006	26005136	microswitch with wheel
0007	19056011	group fixing pin
0008	22194612	general wiring 230V Bv901
0009	22194512-02	general wiring 24V BV901
0010	22194412	expansion board cable BV901
0011	22131712	boiler probe cable

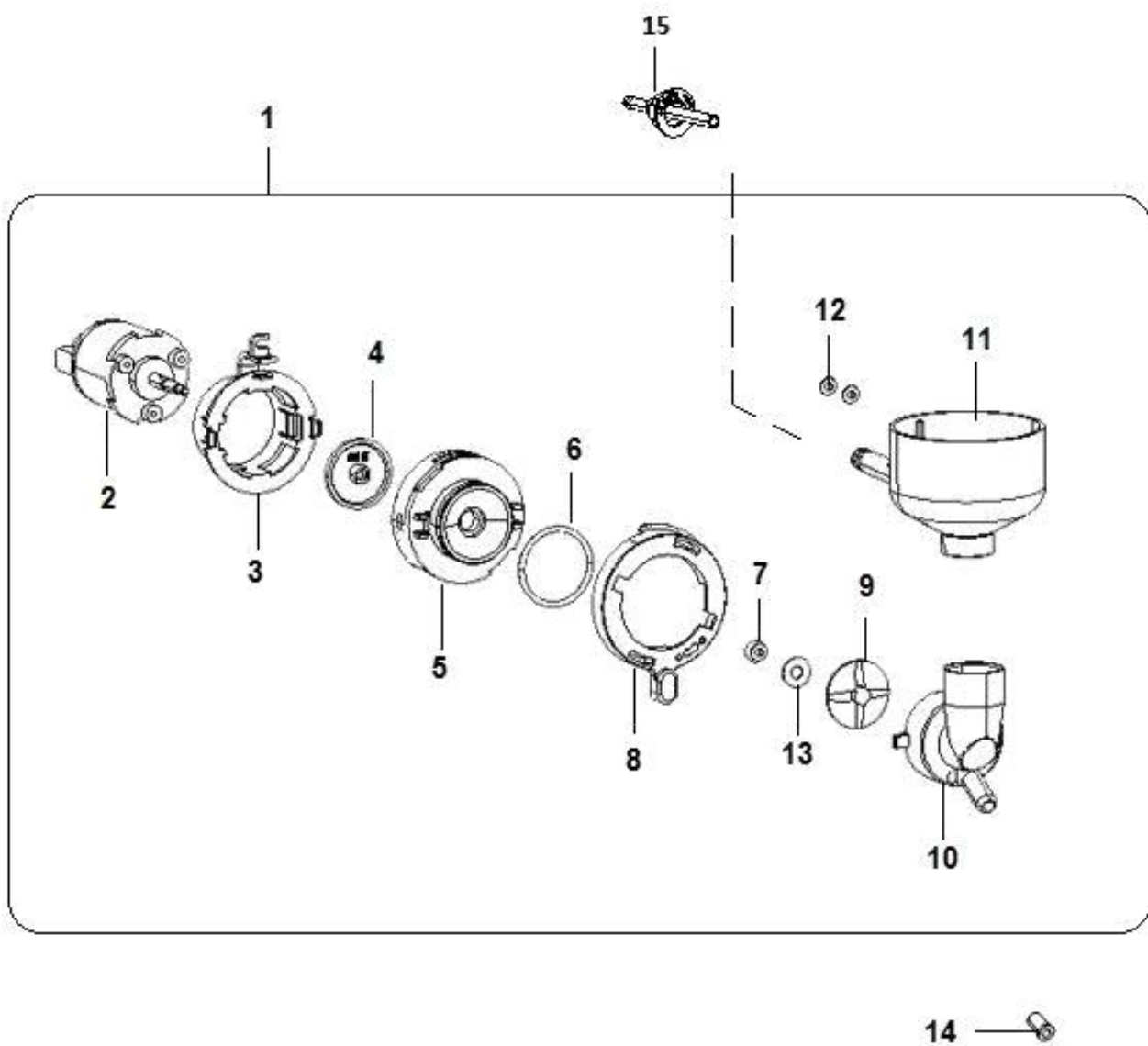




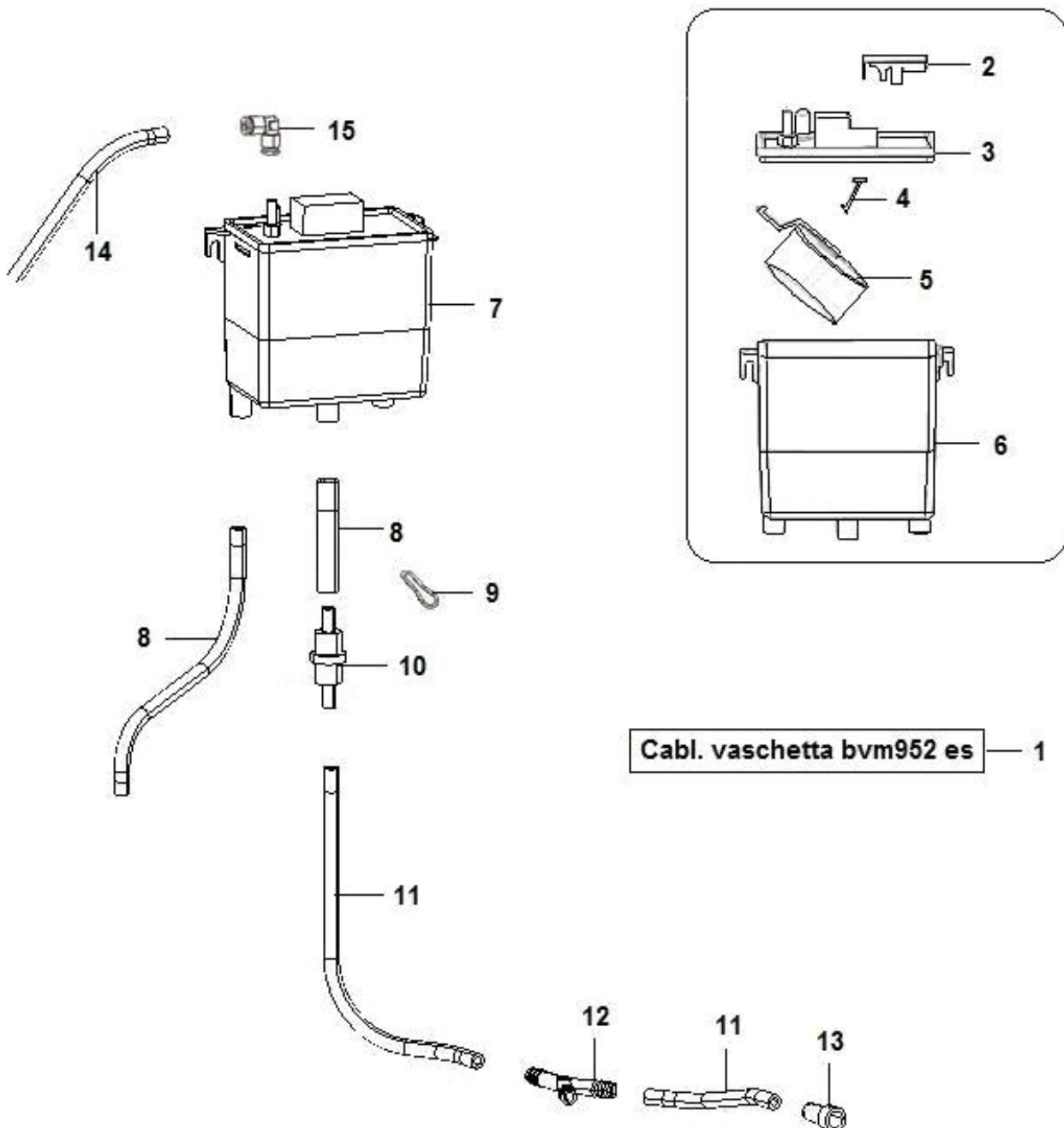
Pos.	Code	Description
0001	05261015M09	CASSETTO ASPIRAZIONE NERO
0002	05260915M09	CAMERA CASS.ASPIRAZIONE NERO
0003	05248115-02M09	Suction pipe joint
0004	09031113	28x33 Leviflex pipe
0005	05145925M09	COLLARE COPP-MISC.SPRINT NERO
0006	09087843-02M09	TUBO SIL.SZ.7X11 NERO
0007	09087823-02	brown sez silicon pipe 5x9
0008	09087873-02M09	TUBO SIL.SZ.3X6 NERO
0009	05248915M00	BV931 pipe nozzle bush
0010	05099715-01M09	UGELLO CAPILLARE L= 48 NERO
0011	05246315M09	BECCUCCIO EROGAZIONE Ø5.5 mm NERO
0012	05246215-01M09	Black dispending nozzle support flange
0013	01901611-01	BRACCIO SUPPORTO UGELLI
0014	05260815M18	level sensor plug
0015	05260715M18	sensor floater
0016	05261515M09	foot for doorframe/drops tray
0017	05260515-02M91	VASCHETTA LIQUIDI BIANCO R9003
0018	05260615-01M09	cover for drops tray
0019	05261810M91	drops collector tray assy
0020	07017711	tea serpent. spring
0021	05141815-01M09	Brown tea serpentine support



Pos.	Code	Description
0001	06170140CL	ASS.ALIM/ASP LEISA A/R ES STD
0002	34103116	8MA hex nut
0003	35160616	Ø 8.3 self-locking washer
0004	01930041-02CL	SUPP.INTERRUTT.E ASPIRAZ.
0005	25000196	E.V. R156 RPE CON FILTRO E VNR
0006	23039516	UL 20A switch
0007	05265311	protection plate for filter
0008	26012136	115/250 cULus-VDE net filter
0009	32222976	self-tapping screw 4,8*12
0010	01916961-01ZNC	CONVOGLIATORE ARIA 3 BOCCHIE DRITTE
0011	05071915	aspiration pipe connection
0012	01919311-01ZNC	BV303/901 fan bearing stirrup
0013	20035516-01	24VDC 0,5A aspirator
0014	32223716	TSP A/F 2,9X9,5 ZN screw
0015	22207916	SK.PRE.C19 PLUG SWITCH CABLE
0016	32050416	M4x8 screw
0017	04092516	2 elbows connection w/quick conn. Diam.6
0018	04079316	GOMITO CODOLO 6-6
0019	22208722	LEISA switch/filter cable



Pos.	Code	Description
0001	96067780-01CLRC	ASS.MIXER 18K MTB S/COLLARE BV303 *
0002	20020046	24VDC mixermotor w/o cable
0003	05241115-01M09	FLANGIA SUPPORTO MOTORE NERA
0004	05154015M09	DISCO PROTEZ.MOTOFR. NERO
0005	05243112M09	Black chamber support flange
0006	36210716-01	Black OR 32,99X2,62 FKM 75SH
0007	36351215M09	WRING gasket. Hole diam = 4. Lip = 10
0008	05240915M09	FLANGIA BLOCCAGGIO CAMERA NERA
0009	05111825	mixer impeller
0010	05111625M09	CAMERA MISCELAZ. NERO
0011	05113765M37	mixing bowl w/hole 5,7 brown
0012	36203816	OR 106 6,75/1,78 gasket
0013	35155236	level ground washer Ø 4.3 IX
0014	05132015M37	MILK FLOW REDUCTOR BVM302
0015	05261115M09	INIETTORE COPPETTA NERA





**WATER BASIN & CONNECTIONS - 2 (2506)**

Pos.	Code	Description
0001	22183612	BVM952 ES. tray cable
0002	43025216-02	Micro SW1 plate X 9301203
0003	43001016-02	Water tray cover with joint
0004	43017916-01	cam for airbreak cod93012010
0005	43000916-01	floater+ support for 93012010 air-break
0006	43001116-01	SERBATOIO VASCHETTA X 93012010
0007	93012030-03	VASCH.ACQUA C/VALVOLA A GALL.1 MICRO \$
0008	09029753-02	TUBO SIL.SZ.8X12 TRASPARENTE OPACO
0009	07010711	clapper
0010	16014316	water filter
0011	09029763-01	5x9 transparent silicone pipe
0012	05240015M00	3ways connector 9mm ext.
0013	05036515-01M00	drain tube plug
0014	09110016-01	TUBO PTFE 6x4 CALIBRATO Pmax 68BAR #
0015	04041426	2 elbows connection w/quick conn. Diam.6

This diagram illustrates the assembly of the upper cabinet. The main components shown are:

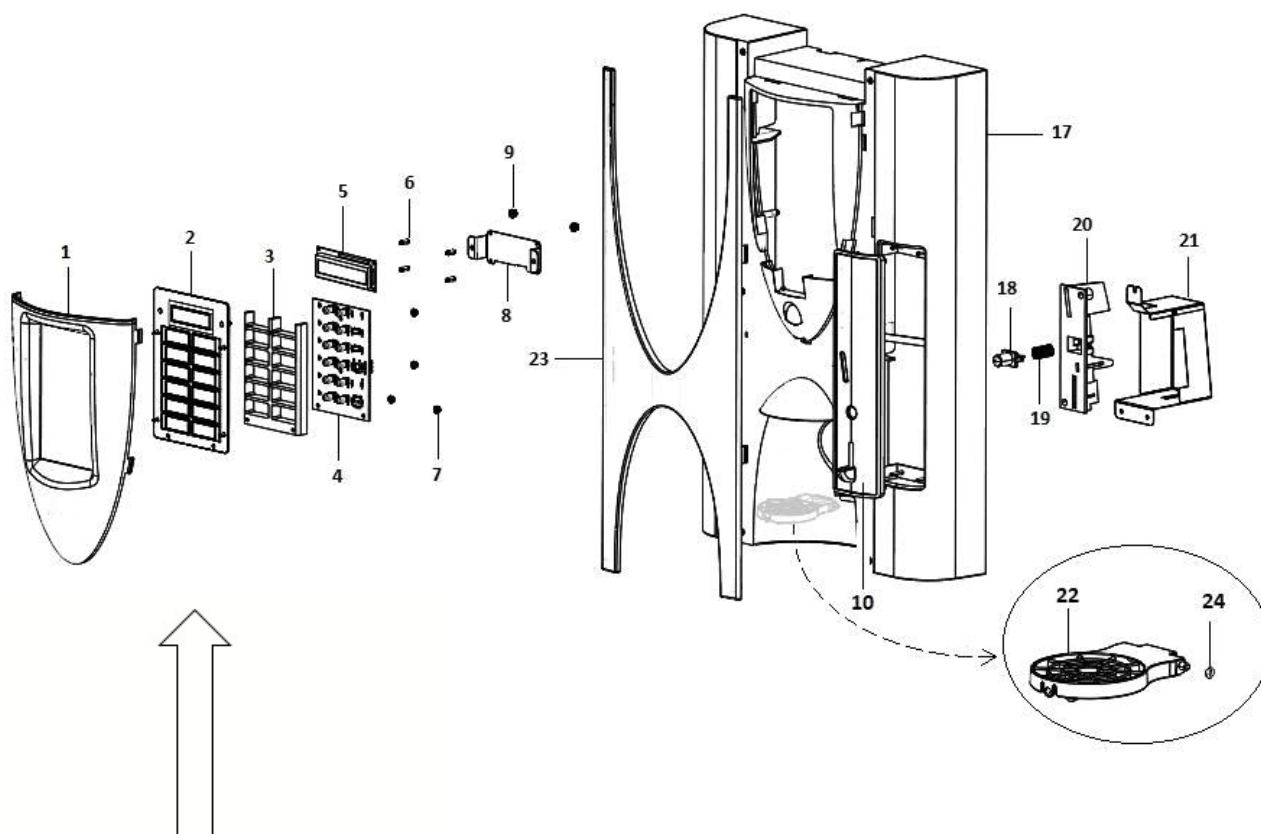
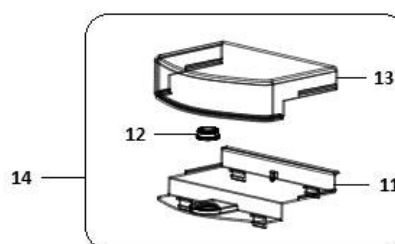
- 1**: The upper cabinet body, which is a large rectangular frame.
- 2**: A small rectangular panel or insert, shown being placed into the upper cabinet body.
- 3**: A small screw or fastener.
- 4**: A screwdriver, indicating the tool used for assembly.
- 5**: A small screw or fastener.
- 6**: A vertical support or bracket.
- 7**: A horizontal support or bracket.
- 8**: A small screw or fastener.
- 9**: A small screw or fastener.
- 10**: A small screw or fastener.
- 11**: A small rectangular panel or insert.
- 12**: A long, thin horizontal strip or panel.
- 13**: A small rectangular panel or insert.
- 14**: A small rectangular panel or insert.
- 15**: A small rectangular panel or insert.
- 16**: A small rectangular panel or insert.
- 17**: A small rectangular panel or insert.
- 18**: A small rectangular panel or insert.
- 19**: A small rectangular panel or insert.
- 20**: A small rectangular panel or insert.
- 21**: A small rectangular panel or insert.
- 22**: A small rectangular panel or insert.
- 23**: A small rectangular panel or insert.
- 24**: A small rectangular panel or insert.
- 25**: A small rectangular panel or insert.
- 26**: A small rectangular panel or insert.

The diagram also includes a label for the upper cabinet body: **GUAINA PA TRECCIATA D.30**.

Pos.	Code	Description
0001	01899912-04L89RC	ASS.CASSONE BIANCO R9003 LEI sa ES
0002	19119116-01	Rubber insert M5
0003	01963511	LEI sa door lock lever
0004	21015336	lock for Sprint/Iris (eurolock)
0005	05145815M37	drain nozzle
0006	05261415M09	coffee grounds container
0007	01901111-03ZNC	DROPS TRAY SUPPORT
0008	21057232	feet for cabinet M8*16 LEI sa
0009	05195216	board spacer
0010	26056246	SCHEDA ESP x SF0506 LIGHT - SF0523Cx02
0011	01940111	DISTANZIALE SCHEDA MASTER
0012	05267215M91	PROLUNG.BIANCO R9003 VETRINA CAFFE LEISA
0013	01932111	cover for water tank
0014	01942311	Plug for cabinet backrest
0015	01901211-01	SCHIENALE LEISA
0016	05301915-01M09	Black service key
0017	01931312-02L89	ASSIEME TETTO VERN.BIANCO R9003
0018	06021611-01	Roof rod
0019	01963811	FERMO TRAMOGGIA CAFFE LEI SA
0020	05261920	coinbox assembly
0021	21057116	BVM921 cabinet hinge
0022	05261225M09	CASS.MONETE LEI200
0023	22101356	plaited sheath d30
0024	43147210-01	SERR.SCATTO L20 90° ORAR C/CHIAVE E LEVA
0025	05261315M09	coin box lid
0026	01636231	LEI200 COIN BOX LOCK LEVER

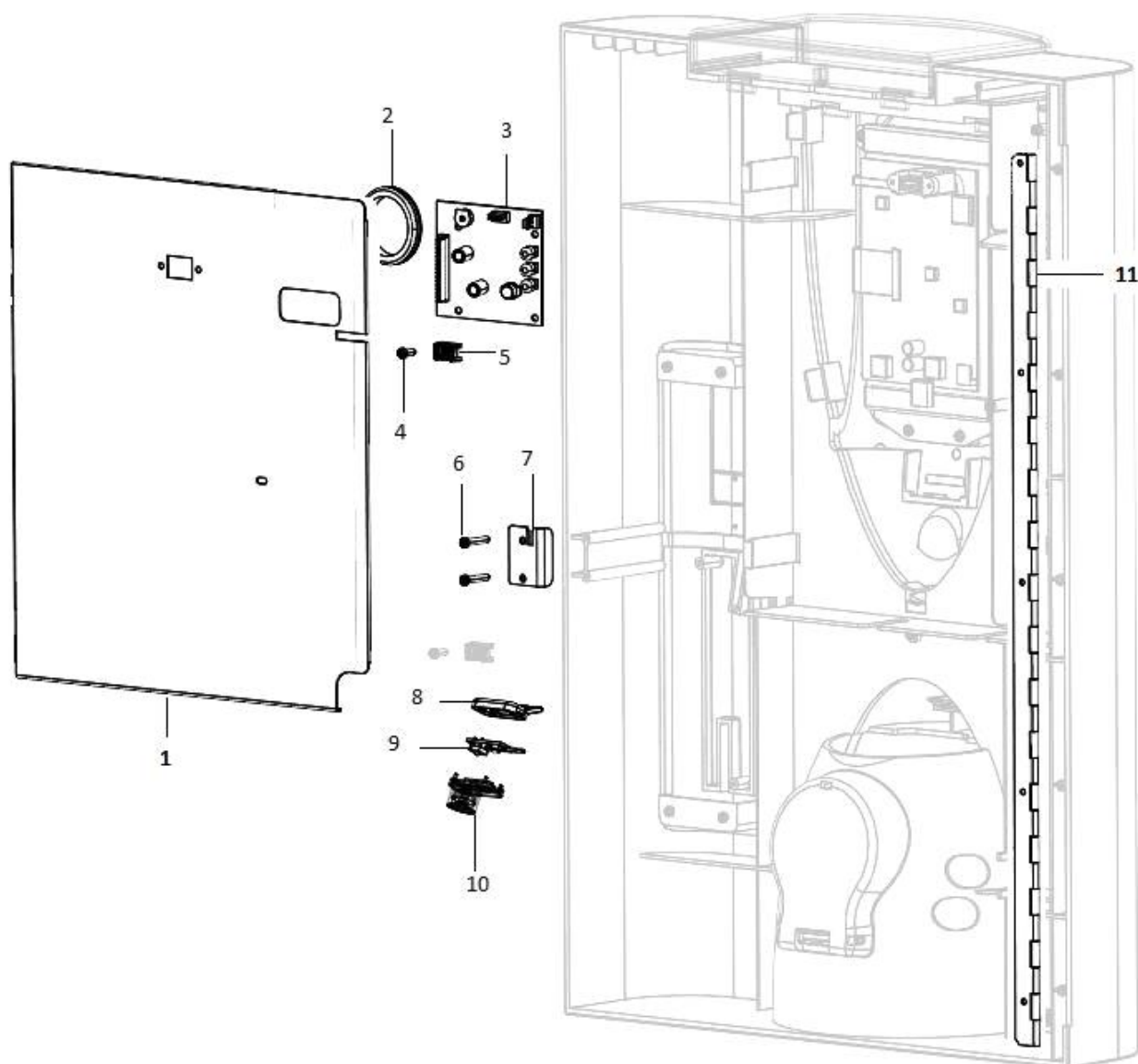
CABL.DISPLAY BV901 — 15

CABL. PULSANT. BV901/LEISA C/GUAINA TERM. — 16



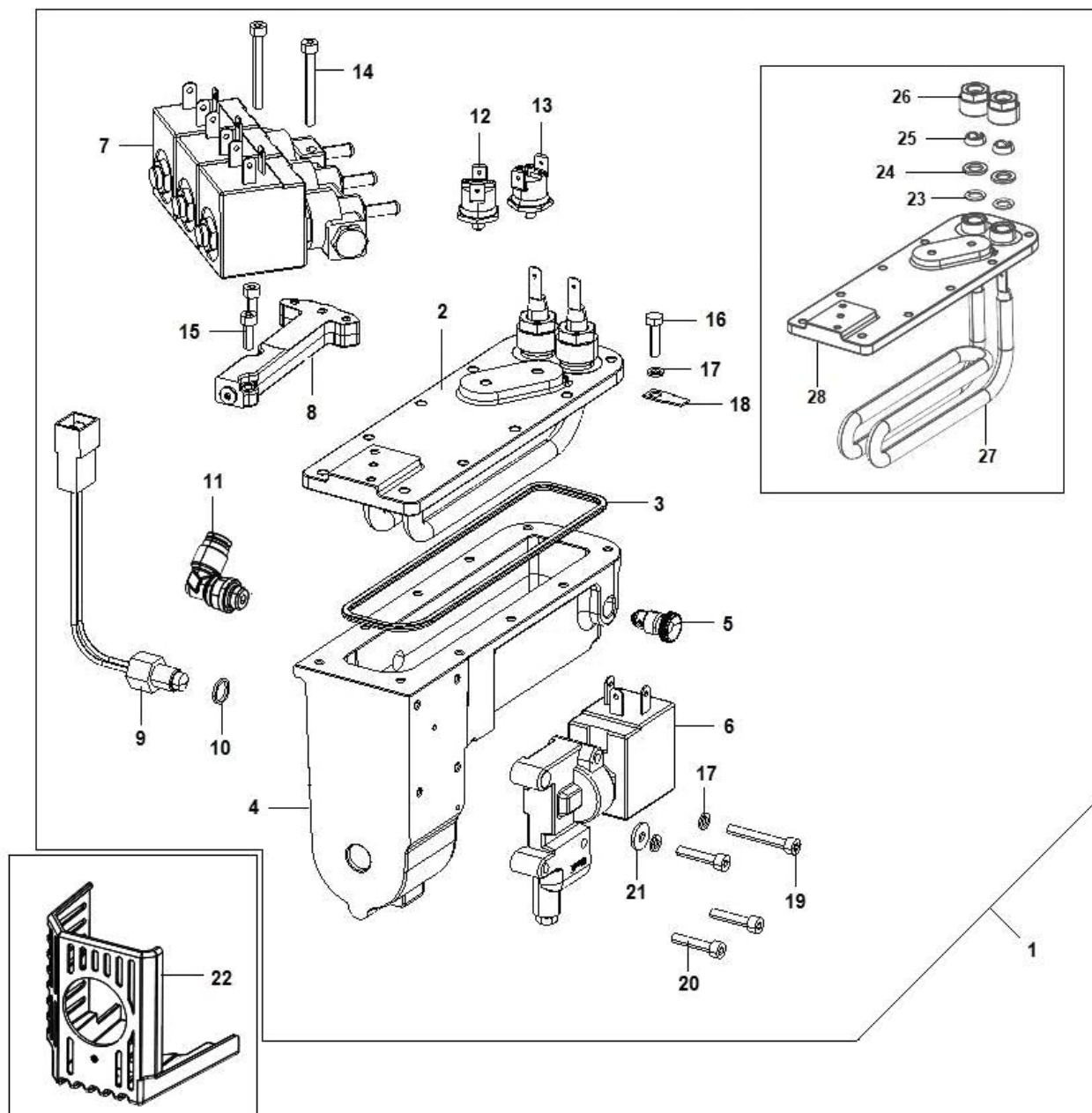
O item 2 pode ser adquirido mais barato,  
somente a película plástica e colante:  
Cód. 30314141 película plástica lei sa ry  
Cód. 30314161 colante da película

Pos.	Code	Description
0001	05383715M91	SCUDO LEISA ESV RESTYLING EASY
0002	06542022	ASMPORTAETICHETTE LEISA RESTYLING
0003	05390411	GUIDALUCE LEISA RESTYLING
0004	26105726	capacitive display board
0005	26027152	DISPLAY GRAFICO 144x32
0006	33065926	display spacer
0007	34115216	M3 hex. nut with washer
0008	06541911-01ZNC	SUPPORTO DISPLAY LEISA
0009	34115316	DADO ES FLANG.ZIG. PG DIN6923 CL 8 M4ZB
0010	05263615M91	MODULO SISTEMA PAGAMENTO LEISA
0011	05260115M00	base for coffee beans bin
0012	05248215M09	TAPPO CAMERA ASPIRAZIONE NERO
0013	05260015M00	upper part coffee beans bin
0014	05261610RC	ASS.CAMPANA CAFFE
0015	22193222	display cable BV901
0016	22194942	CABL.PULSANT.BV901/LEISA C/GUAINA TERM.
0017	05384411	Türe LEISA
0018	05145235M09	PULS.R-MON.SPRINT NERO
0019	00020973	spring button.
0020	05144415M09	coin validator sup sprint/iris
0021	06022111-03	Money controls protection
0022	05260315M09	folding cup holder
0023	05259915M09	R9005 black door frame
0024	36212116-01	OR 2,57X1,78 KFM 75SH NERO

**LEISA REAR DOOR (2510)**

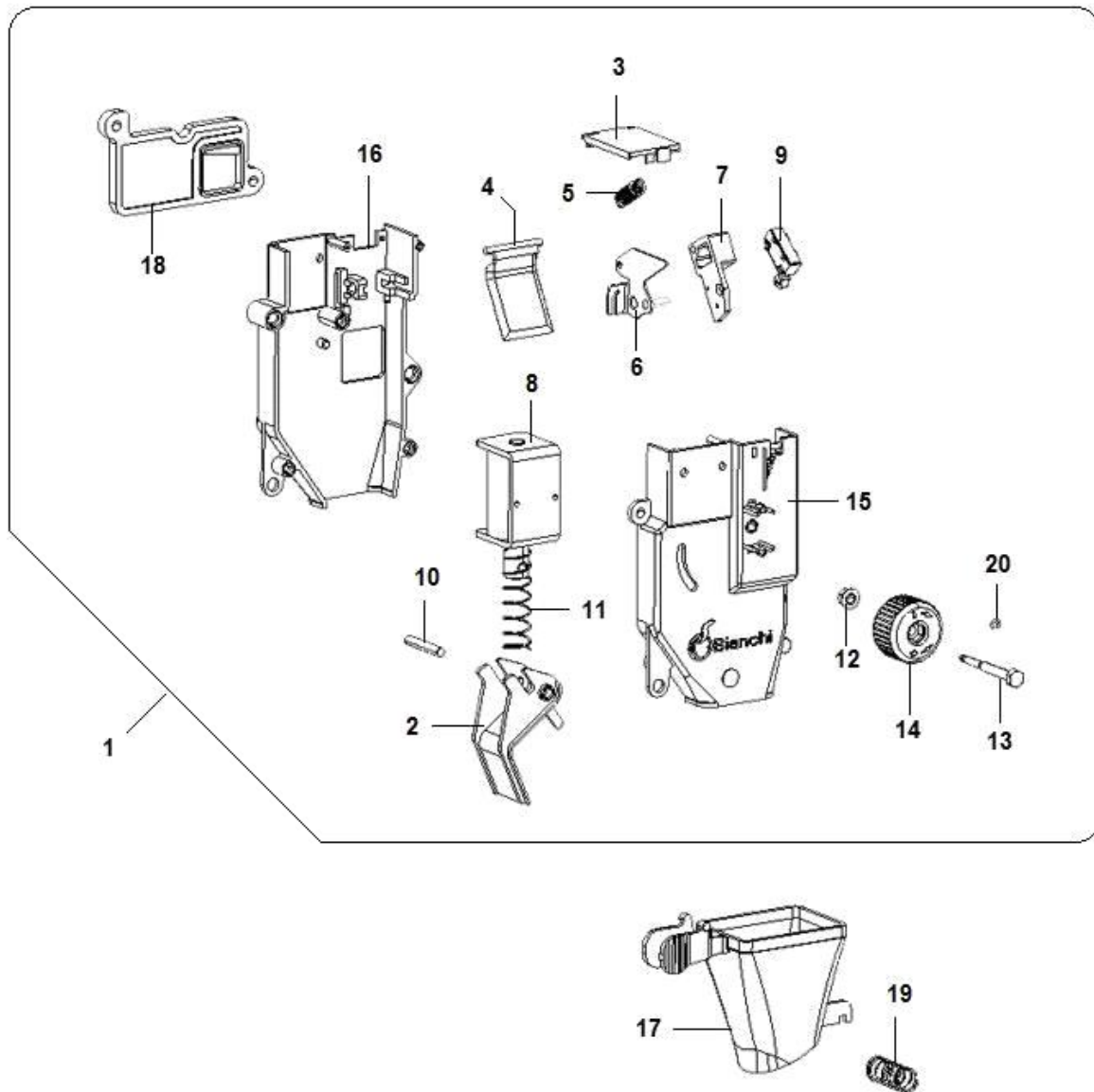
**LEISA REAR DOOR (2510)**

Pos.	Code	Description
0001	01942621ZNC	PANNELO PORTA LEI Sa PER DISPLAY GRAFICO
0002	23004096	cable damper(35* 7 - rubber)
0003	26057136	LEI 220 Graphic dispaly board
0004	32010226	scew 3,5*10 TCB 2F UNI9707
0005	05280216	blocker FTH-13S-01
0006	32010726	screw 3,5* 20 TCB 2F UNI9707
0007	01963611-02	LEI Sa door lock lever stop
0008	05270215M00	LED light diffuser holder
0009	26058316-01	LEISA CUPSTATION LIGHT W/SHEATH
0010	05270115M00	LED light diffuser
0011	21062311L89	ASS.CERNIERA LEISA BIANCO R9003 L.510

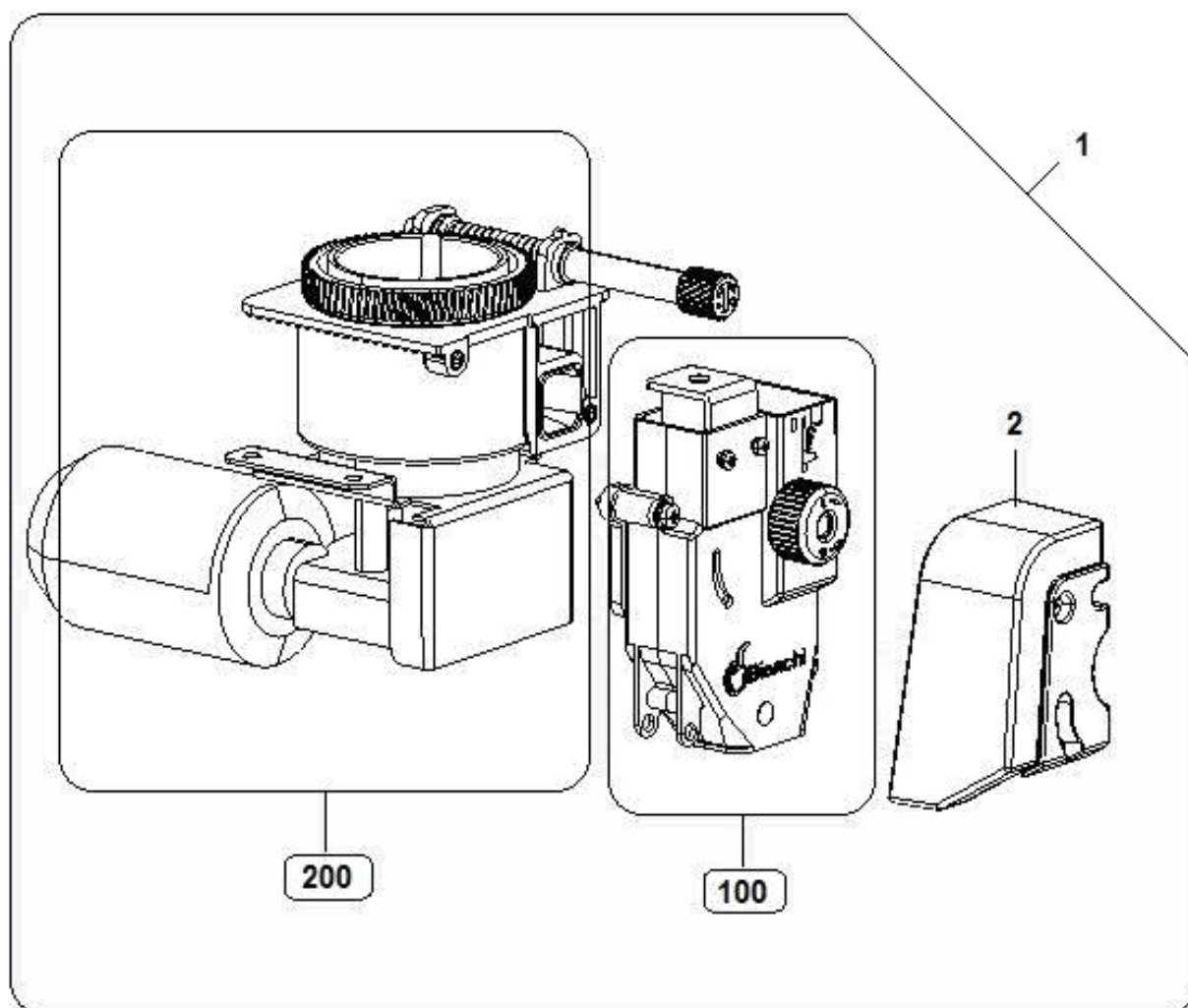




Pos.	Code	Description
0001	85020230-05	ASS. CALDAIA ESP 230V+ 3 EV SOLUBILE
0002	29008120T04	230 V White insulating Dismantled resist
0003	05143815M09	GUARNIZIONE CALDAIA ESPRESSO
0004	13008031-01T03	CORPO CALDAIA ESPRESSO OT57-TM3
0005	04040326T04	ASS.VALV. SCARICO CALDAIA 1/8M OT58-TM4
0006	25020856-01T01	ELV 3VIE 24V DN= 1.5 TM1+ OR 2025 VITON
0007	25021516-04T03	BLOC.3EV 2VIE DN2 24VDC OT57-TM3
0008	19059411-03T04	ASS.BLOCCH.EL-VAL. OT57-TM4+ TAPPO M5+ OR
0009	26050846	Temp.sens. w/connector (inox)
0010	18024516	copper gasket
0011	04068746	Fast fitting . M1/8 Ø6 L OT57+ TM4-OLAB
0012	25020546	automatic recharge clixon110°
0013	25020656	CLIXON 135° C RIARMO MANUALE C/FIL.M5
0014	32068316	TCEI 4MAX35 screw
0015	32065416	4x12 screw
0016	32055536	TCEI 4MAX16 screw
0017	35153426	washer
0018	23020626	male tab
0019	32068216	4MAX30 screw
0020	32067916	TCEI 4MAX20 screw
0021	35157616	plain washer Ø.4, 3 ac.
0022	05398315M09	COPERTURA CALDAIA ES/ESV PA GF
0023	36350216	OR 8 X 1,9 VITON ALIM #
0024	19121111	RONDELLA SPECIALE X RESISTENZA
0025	19121211	Resistance capacity ring
0026	19121311	DADO DI FISS.RESISTENZA
0027	29007321	RESIS.1500W230V SMON.CALD.ES ISOL.BIAN #
0028	14006141T04	FLANGIA RESIST.C/ATTACC.FILETT #

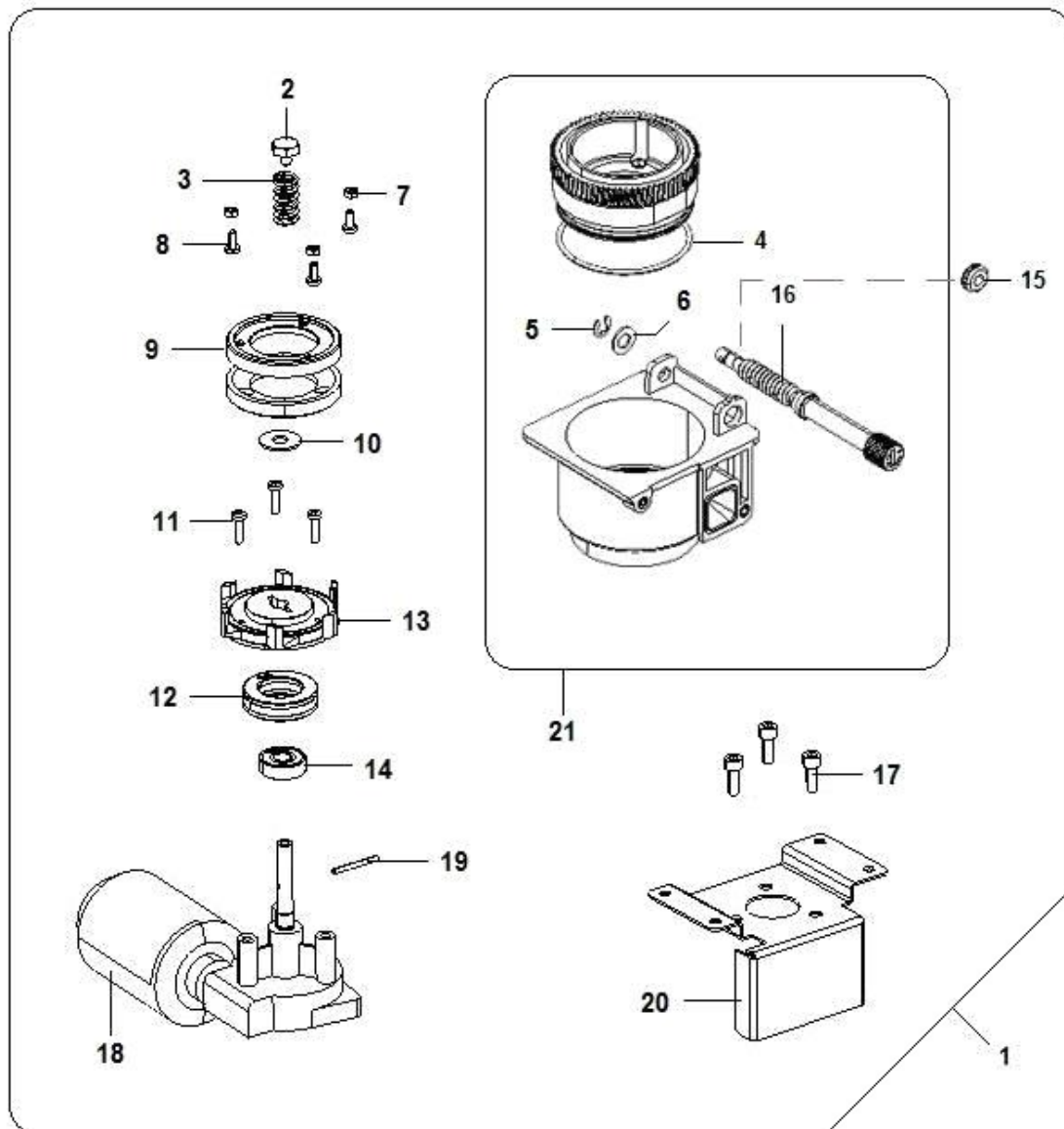
**ASSEMBLY DOSER CAFFE (964)**

Pos.	Code	Description
0001	43002410-02	doser assy with spacer
0002	05135115-01	coffee doser tray
0003	05135025M09	Black M/T coffee doser cover
0004	05135315	coffee doser mobile bulkhead
0005	07020611	spring
0006	01586212-02	MICRO SUPPORT
0007	05154615M09	SUPP.MICRO DOS-CAFFE C/POM.NERO
0008	20019146-01	magnet 5% 24v dc
0009	26029616	microswitch with cable(proof)
0010	33051716	4x25 IX parallel pin
0011	07020511-01	magnet spring
0012	34115316	DADO ES FLANG.ZIG. PG DIN6923 CL 8 M4ZB
0013	19058911	adjusting screw for micro
0014	05135215	MANOPOLA NERO REGOLAZ.DOS-CAFFE
0015	05134815M09	Black coffee doser front covering
0016	05134925M09	Black coffee doser back M/T
0017	05135415-01M09	Black cut coffee funnel
0018	05155615-01M09	Black spacer doser
0019	07020911	coffee funnel spring
0020	37000816	seeger ring



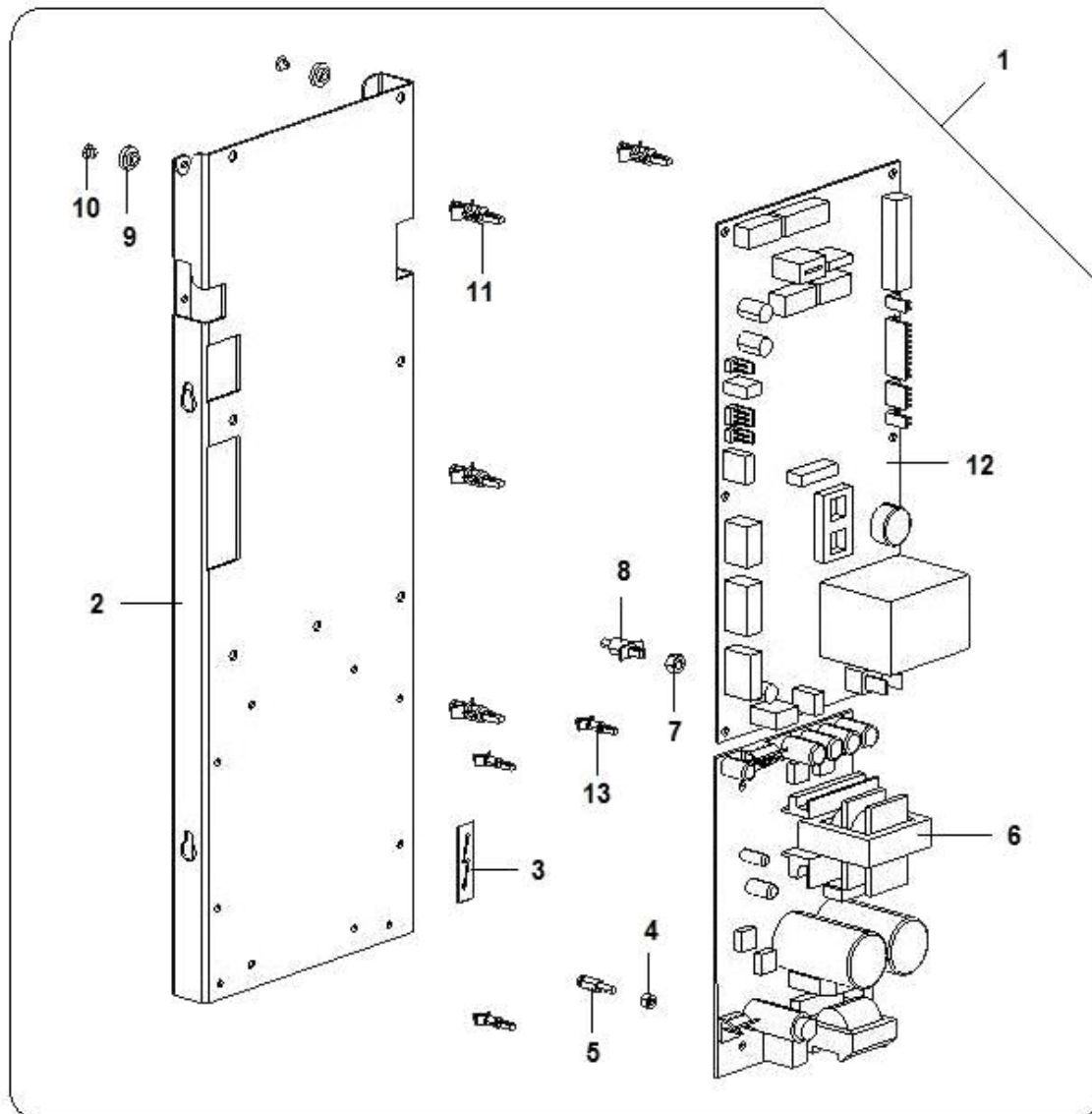
**ASSEMBLY GRINDER-DOSER LEI sa (1059)**

Pos.	Code	Description
0001	96044520-01	LEISA 24DC coffee grinder-dispenser assy
0002	05301615M09	BLACK COFFEE CARTER GRINDERDOSER



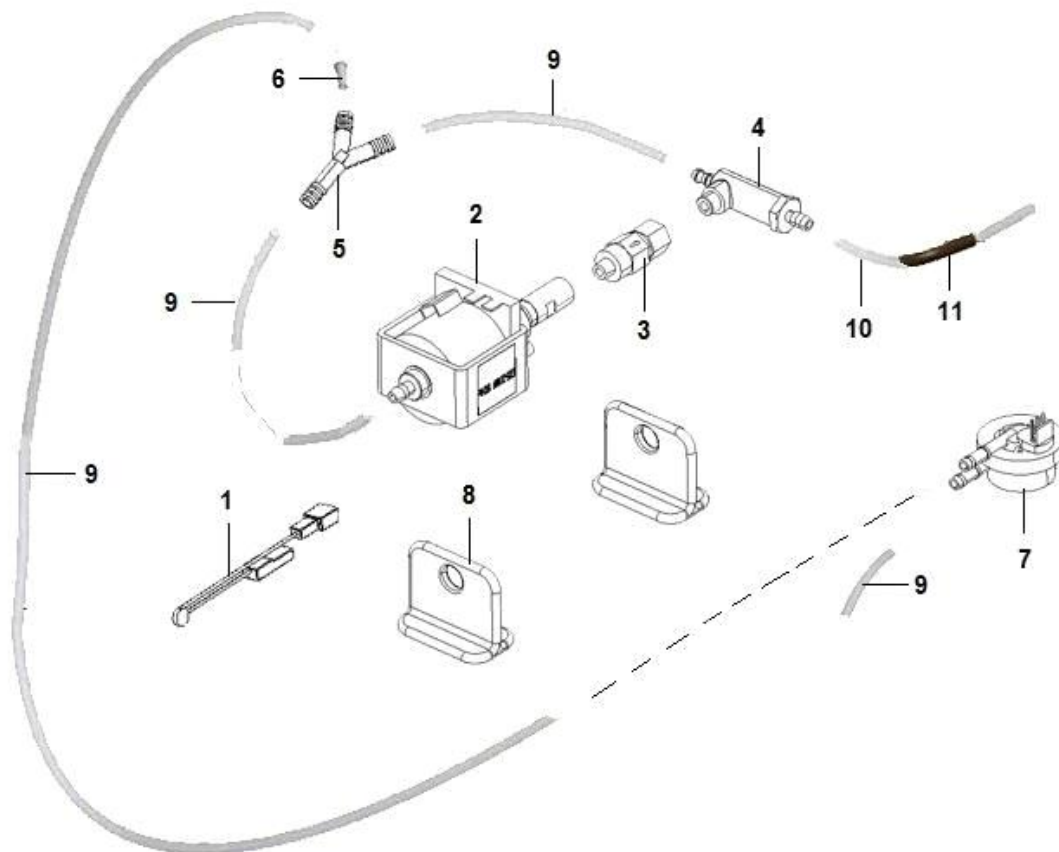
Pos.	Code	Description
0001	86001220RC	ASS.MACININO MAC-64 24V LEISA
0002	19059011-02	screw for spring
0003	07020411	grinder holder spring
0004	36211316-01	OR 66,35X2,62 FKM 75SH NERO
0005	37001116	Ø 6 seeger ring
0006	35168826	flat washer D.8,4*15,5*1,2
0007	34102836	4MA nut hexagonal
0008	32060536	VITE TCC PG DIN 7985 INOX A2 M4X10 #
0009	18007316-01	D= 64 grinder blade 20teeth
0010	01586411	blade holder disk 9.25x23x1.5
0011	32060836	Cross headed screw 4MA*16 IX
0012	19059216	bearing
0013	13008211-03	Mobile blade support
0014	19059116	bearing
0015	23004086	cable damper(6*15 - rubber)
0016	05134715M09	POMOLO REGOLAZ.MACINATURA NERO
0017	32135526	DIN7984 6MAX16 screw
0018	20019016-01	grinder motor 24VDC
0019	12017411	wire D30x30
0020	01586941	LEISA grinder support
0021	43018910-01M09	Black Grider chamber with with knob

Flat 10 pin 12v L=2000 — 14

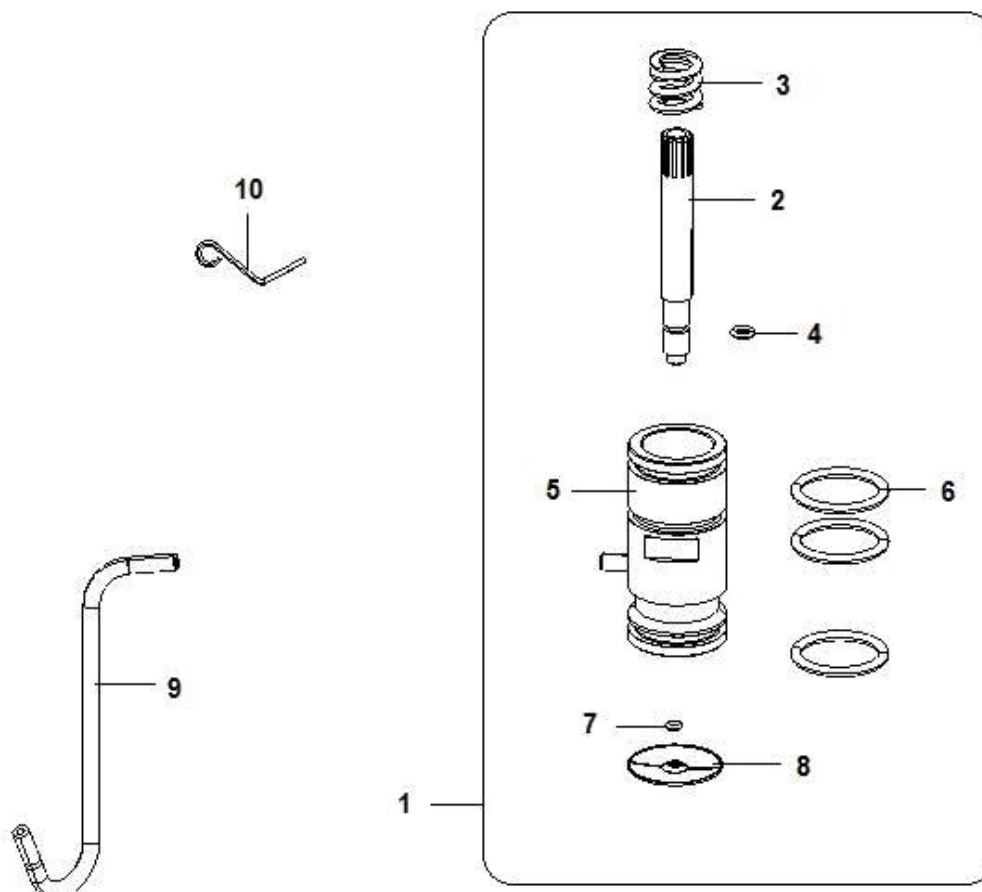




Pos.	Code	Description
0001	94034220-01	master-switch boards assembly
0002	01916511-02	Master-switching board support
0003	30053411-01	iris voltage safety stiker
0004	34110116	3MA selft-locking nut
0005	33071926	Metal spacer M/F/ M3L.
0006	26048356-02	switch powersupply24V120W/360W
0007	33065726	4M nut for board spacer
0008	33065526	L= 10 card spacer
0009	19054411	rivet bush
0010	33050476	Steel rivet 3,2x6
0011	05195216	board spacer
0012	26056126-01	SCHEDA MICRO/POTENZA SF0506CA05
0013	33072046	PLASTIC SPACER M/F M3 L. 7, 9
0014	22198812	10pin 12w L= 2000 flat cable



Pos.	Code	Description
0001	25022636	Clixon Microtherm F11 100° C
0002	27003286	EL-POMPA EP5 230V 50/60HZ PX50-A2P-N08R
0003	04041026	Male unleaded anti return valve
0004	04040916-02	SAFETY VALVE 11BAR PRO
0005	05240015M00	3ways connector 9mm ext.
0006	05102225M09	RIDUT.CAM-MISCELAZ.INT.Ø1.7mm-2,6mmNERO
0007	24012116	flow sensor
0008	05259515M09	Pump support (ULKA/FLUIDOTECH)
0009	09029763-01	5x9 transparent silicone pipe
0010	09110016-01	TUBO PTFE 6x4 CALIBRATO Pmax 68BAR #
0011	09087843-02M09	TUBO SIL.SZ.7X11 NERO

**ASSEMBLY PISTON (7)**

**ASSEMBLY PISTON (7)**

Pos.	Code	Description
0001	05138130-01	Cegasa coffee-gr. piston assy
0002	05107725M09	POMOLO FILTRO PISTONE NERO
0003	07017611-01	piston spring
0004	36210916	OR 5,28X1,78 FKM 75SH NERO
0005	05148032-01	Piston with valve seat
0006	36211816-01	OR 28,1X 3,53 FKM 75SH NERO
0007	36212116-01	OR 2,57X1,78 KFM 75SH NERO
0008	43000220	ASS.TRASS.FILTRO GR-CAFFE MAGG.
0009	09087873-02M09	TUBO SIL.SZ.3X6 NERO
0010	07017511	piston block rod